



TES[®]

28 MAGNAM

Contents

04

Dealers

08

Tes Magnam

12

Quality & Comfort

14

Hull colors

16

Interior design

18

Kitchen variations

19

Kitchen additions

20

Fridge variations

21

Electric dashboard
panels

22

Audio

23

Contact



◆ Dealers



TES Yachten

Deutschland, Österreich & Schweiz

Schatzlgasse 28 82335 Berg

+49 (0) 17630623350

sailing@tes-yachten.de



SUNGWOO SHIPPING CO.,LTD. (Old Name : Marine21)

#721, 312, Suyeong-ro, Nam-gu,

Busan, Korea

+82-51-465-9647

oldsalt@naver.com



Tes Yacht Italy Northeast Vialtaia

Cesare Battisti 138

Lonigo (VI) 36045

+39 3494594402 +39 0444 835664

northeast@alice.it



Tes Yacht Turkey Gozdem

Marin Mimar Sinan Mahallesi, Üsküdar
Caddesi

YEDPA Ticaret Merkezi H2 Caddesi P2
No:99 Ataşehir İSTANBUL, TÜRKİYE 34779

0216-4559824 0538-771109

pelindemirayak@gozdem-marin.com



Tes Yacht Canada

30 Sai Crescent

Ottawa, Canada

+6 135 237 857 +6 137 994 982

info@tes-yacht.ca



U.S.Yachts & Customs, Inc.

092-513-2530

sail@usyachts.co.jp





◆ Tes 28 Magnam



[WATCH VIDEO ABOUT](#)

Go beyond the usual form, allow yourself extraordinary comfort.

Magnam means big, huge! Just as great is the comfort and fun of sailing this yacht, it gives a sense of solidity in workmanship and safety while traveling.

We know how and why, for many sailors who love wind and water, the comfort of sailing and life on a yacht is important. The point is to be able to focus on what is important to us, to get as much fun from sailing as possible! Therefore, we attach great importance to the possibility of enjoying peace during long and short journeys and the pleasure of using the tasteful, stylish interior of the yacht.

Thanks to its well-thought-out design, the Magnam can be easily guided on the water, and the stunning hull line delights even the most discerning sailors.

Swing keel



False keel



Fixed keel



The most important features of the yacht:

- classic hull line
- modern, tasteful, spacious interior
- the central part of the yacht is a large and comfortable mess with a well-equipped galley
- separate, closed fore and aft cabin
- large sanitary cabin with toilet and shower
- excellent living conditions for the crew
- design category B or C depending on the method of ballasting
- excellent yacht ventilation
- safe, ergonomic cockpit with high backrests, equipped with a closed aft platform that protects against accidental falling out and at the same time provides a perfect place for a bath
- easy access to all the on-board accessories necessary for sailing an organized galley and a mess room creating a space for feasting
- plenty of storage space
- the ease and pleasure of sailing



4-6 in charter version



2-4 in owner version

Tes 28 Magnam Parameters

Length | **8,18 m**

Beam | **2,98 m**

Weight | **+ 3500 kg**

Ballast/Swing keel | **880 / 120 kg**

Draft | **0,46 / 1,63 m**

Number of berths | **6+1**

Height in the cabin | **1,87 m**

Mainsail / Jib from | **21,3 / 14,5 m²**

CE Category | **B**

Engine power | **max. 22,1 kW**





◆ Quality & Comfort

We are designing Tes yachts with **customers comfort** and **convenience** in mind. That is why each of our units is already generously equipped in the standard version. We only use the **highest quality** materials.

The shipyard itself has been producing yachts in Drzewica continuously for **several decades**, and the company's headquarters is located in Gdynia – the sailing capital of Poland.

We take care of every detail of the boat, it's nautical parameters and tasteful finish. The decks of our units are finished with high-quality teak wood. The wood is processed in such a way as to make it resistant to the harmful effects of external factors, especially moisture and salt.

For development projects, we use unique construction ideas, based on ergonomics and a hedonistic desire to experience pleasure.

We constantly improve the **legendary** constructions and equip them with **the highest** quality yacht jewelry. We take care of every detail of the boat, its nautical parameters and tasteful finish.



◆ Possible hull and stripes colors

You have the option to personalize the hull and stripes color of your yacht by choosing from the entire RAL color palette. The RAL color system is a widely recognized color matching standard that includes a wide range of colors, allowing you to choose a shade that perfectly suits your preferences. From classic shades of white to bold and vibrant colors, the possibilities are endless.

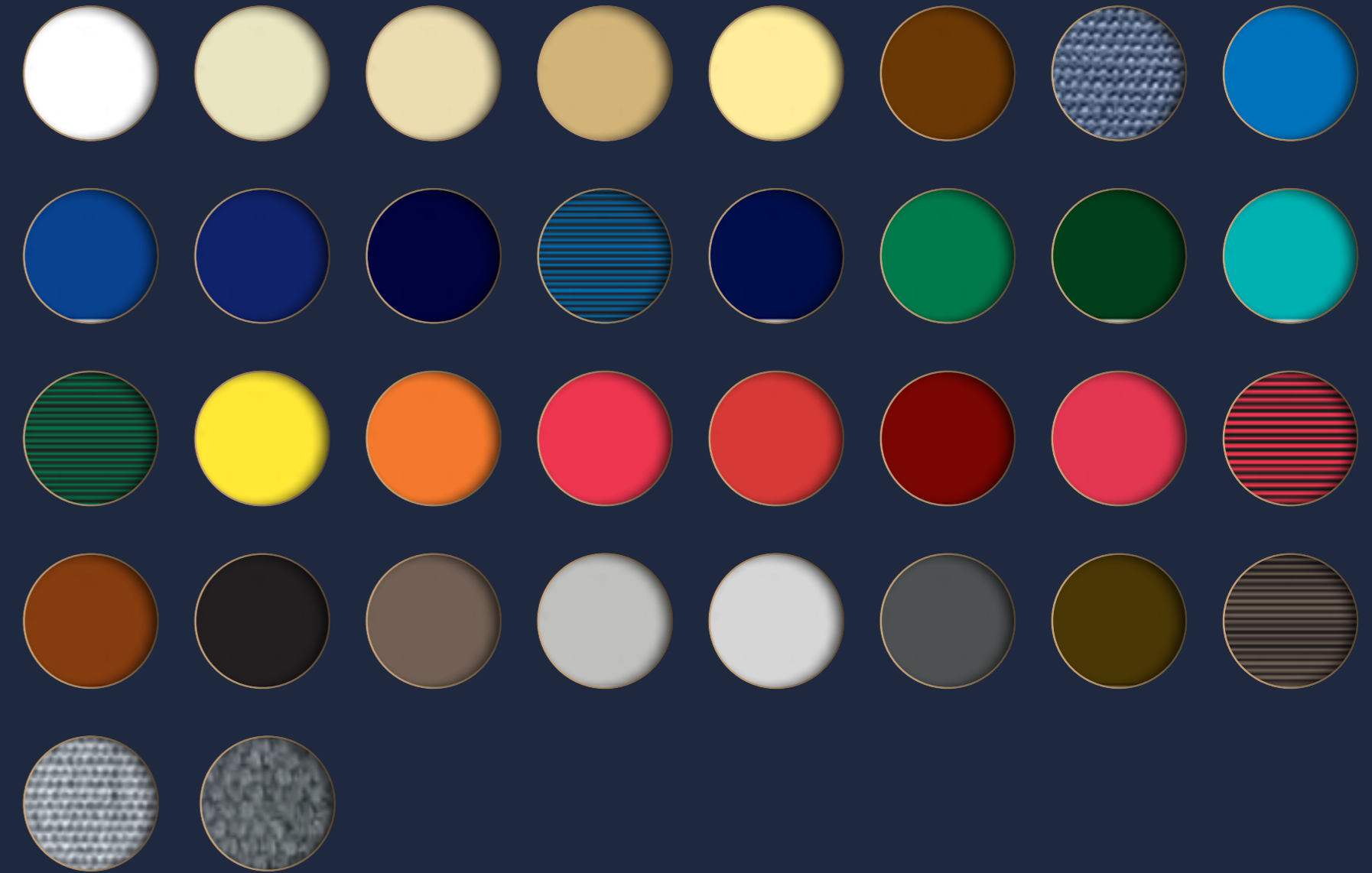
To choose your preferred color, simply provide the RAL color code to our team, and we will ensure that your yacht's hull is painted in the exact color you have chosen. Please note that the final appearance of the color may vary depending on the type of paint and finish used, as well as environmental factors such as lighting and weather conditions.

Choosing a unique hull color can make your yacht stand out and reflect your personal style, while also adding a touch of individuality to your vessel. If you have any questions about choosing a hull color or would like more information, our team is always available to assist you.



RAL palette

Sail material variations



Custom made interior design

Choose a contemporary, custom made interior design that makes spending time on a yacht a truly enjoyable experience.

On our vessels, you can choose interior finishes to bring the comforts of home to your yacht.

The interiors in our yachts are handmade. The furniture showcases an exceptional finish and is made from the finest woods. They stand out with contemporary style and stand the test of time. You can choose the type and color of fabric to suit your needs and the mattresses are measured and fitted with the highest precision.

TES sailing yachts are famous for the quality of the materials. In each of our models, we have ensured that just the right amount of light enters the interior of the yacht.



Create **your** yacht to **your** liking.

Internal wood variations



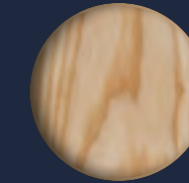
Oak



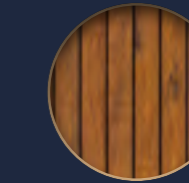
American walnut



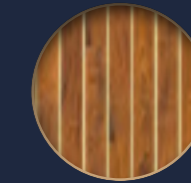
Mahogany



Ash



Dark stripe floor



Light stripe floor

Materials to choose



◆ Kitchen variations

Every type of kitchen can be equipped with plenty of options:

- ◆ Top loaded compressor fridge
- ◆ Front opened compressor fridge
- ◆ Cooker under glass flap
- ◆ Cooker on cardan joints
- ◆ Oven with cooker on cardan joints
- ◆ We can make additional drawers
- ◆ Outboard water instalation to the kichen

And many, many more...



Standard variant

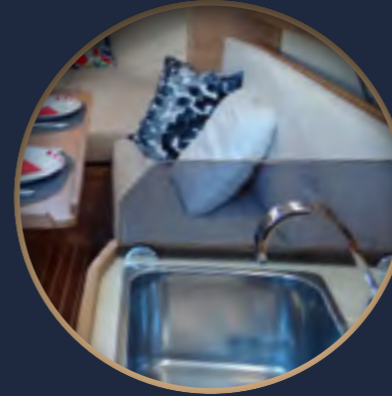


Medium variant

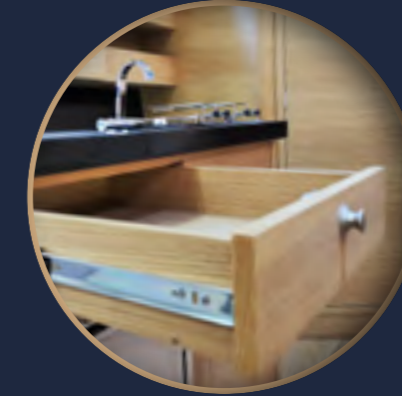


Large variant

◆ Kitchen additions



Plexi at a side of sink



Drawer for cuttlery



Cooker on cardan joints



Sink under the corian
type countertop



Oven on cardan joints



Sample of cooker
with glass flap

◆ Fridge variations

Depending on the type of kitchen furniture, we can install a front-loading fridge. If space permits, we can mount **40-60 liter** refrigerators. By default, the refrigerator is always powered by a **12V battery**.

We are also installing **ventilation grilles** on the countertop and under the fridge, and with the option of a large kitchen, we can install a mounting frame - the fridge is one line with the cabinets.



Dometic CRP40



Elegance
40l - 70l



Vitrifrigo c50i



◆ Electric dashboard panels

Depending on the number of electrical devices and indicators, we can use different layouts of buttons and indicators. The pictures above are just an example. The standard equipment includes a BEP panel with 6 buttons + WEMA indicators and sensors



Standard BEP panels with WEMA gauges.



BEP board on engraved PLEXI (With unit name + holes for indicators)



Amperflex Premium glass dashboard with micro monitor display



Amperflex Premium glass dashboard with micromonitor display, hydromagnetic fuses and boat engraving.

◆ Audio

The audio system we offer may consist of a radio, two speakers in the mess room and/or two speakers in the cockpit. On request, we can expand the audio system with an additional subwoofer or speakers in the bow, in the stern berth or in the bathroom. With the radio, we are mounting an internal FM antenna, or a mast antenna on request. All radios we offer support MP3 format and wireless Bluetooth communication.



Kenwood
MP3 / bluetooth radio



Clarion Marine
CMS4 radio



Fusion Marine
bluetooth radio



Pioneer
MP3 / bluetooth radio
with touch screen

◆ Contact



+48 534 260 450



biuro@tes-yacht.pl



www.tes-yacht.pl



TES YACHT



TES.YACHT



TES YACHT

